



Welcome to Class



Week 3
Class 1 and 2

Mtra. Elizabeth Acosta
ESL / EFL Coach

Week 1

Class 1 / First hour

- Introduction
- Greetings/Introductions: Basic small talk including “How are you?”
- Subject Pronouns: I, You, He, She, It
- Possessive Adjectives: My, Your, His, Her

Class 2 / Second hour

- Numbers 1 – 100: Pronunciation, counting skills, telephone numbers
- Alphabet/ spelling skills
- Present of the verb “to be”: Conjugation of the verb, questions and negative forms for all subjects.
- Subject Pronouns: I, You, He, She, It, We, You, They
- Possessive Adjectives: Its, Our, Your, Their

Week 2

First hour

- Family
- Nouns
- Places
- Articles: Basic rules for definite and indefinite articles, a, an, the

Second hour

- Basic Descriptive Adjectives: Ability to describe objects simply.
- Colors
- Demonstratives Pronoun: Recognizing the connection between “this, here” as opposed to “that, there”

Week 3

First hour

- Basic prepositions use: in, at, to, on, etc.
- There Is, There Are: Difference between singular and plural, question and negative form.

Second hour

- Present Simple: The use of present simple for describing everyday routines.
- The time

Week 4

First hour

- Question Words: The use of “wh-” question words as well as “how much” and “how many”.

Second hour

- Adverbs of Frequency: The use of adverbs of frequency such as: always, often, sometimes, never.
- Time Expressions

**TODOS
BILINGÜES**



Grupo Innovador Lingüístico S.C

**ARE YOU
READY?!**

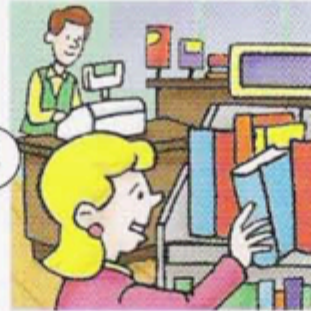




Bakery



Barber shop



Book store



Bus station



Cafeteria



Hospital



Department S.



Drug Store



Hair Salon



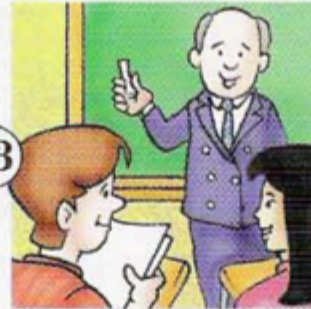
Gym



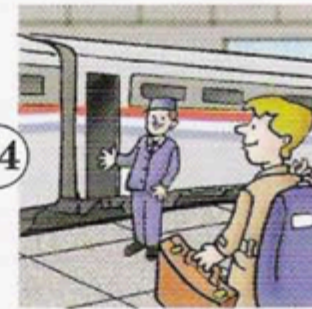
Hotel



Laundromat



School



Train station



Video Store



Next to

**Across
from**

Between

**Around
the corner
from**



- A.** Where's the restaurant?
- B.** It's **next to** the bank.



- A.** Where's the supermarket?
- B.** It's **across from** the movie theater.



- A.** Where's the school?
- B.** It's **between** the library and the park.



- A.** Where's the post office?
- B.** It's **around the corner** from the hospital.

Let's practice!



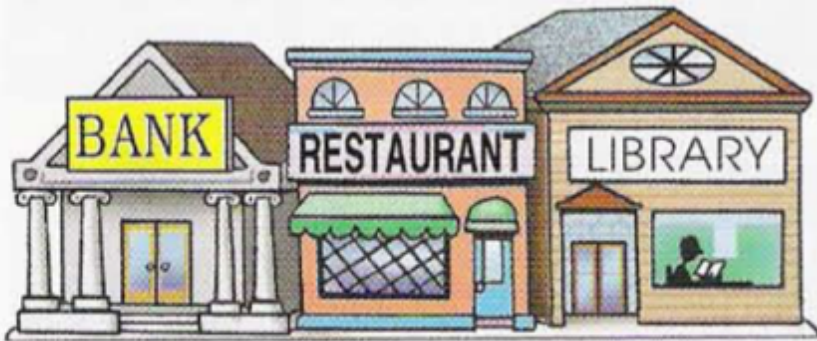
Across from / Next to Around the corner from / Between



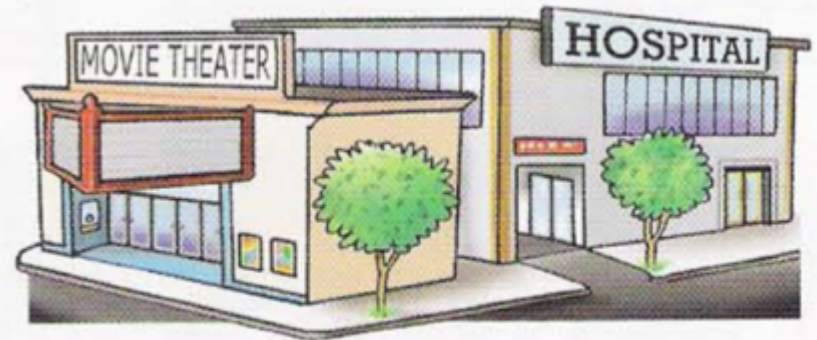
1. Where's the bank?



2. Where's the post office?



3. Where's the restaurant?



4. Where's the hospital?



A: Excuse me. Is there a laundromat in this neighborhood?

B: Yes. There's a laundromat **ON Main Street, **next to** the supermarket.**

Let's practice!



A: Excuse me. Is there a laundromat in this neighborhood?

B: Yes. There's a laundromat **On Main Street, next to the supermarket.**



1. Drug store



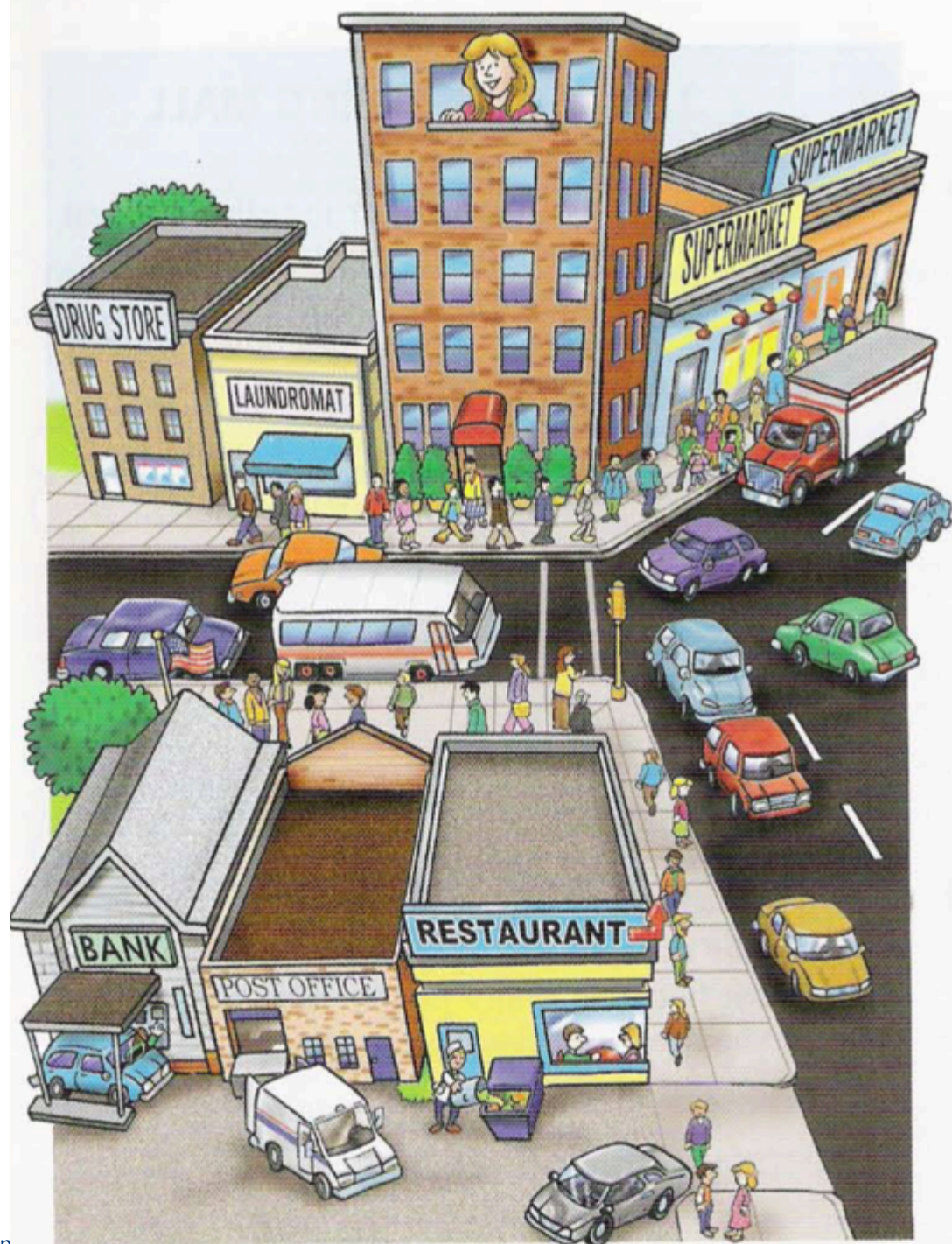
2. Clinic



3. Department store



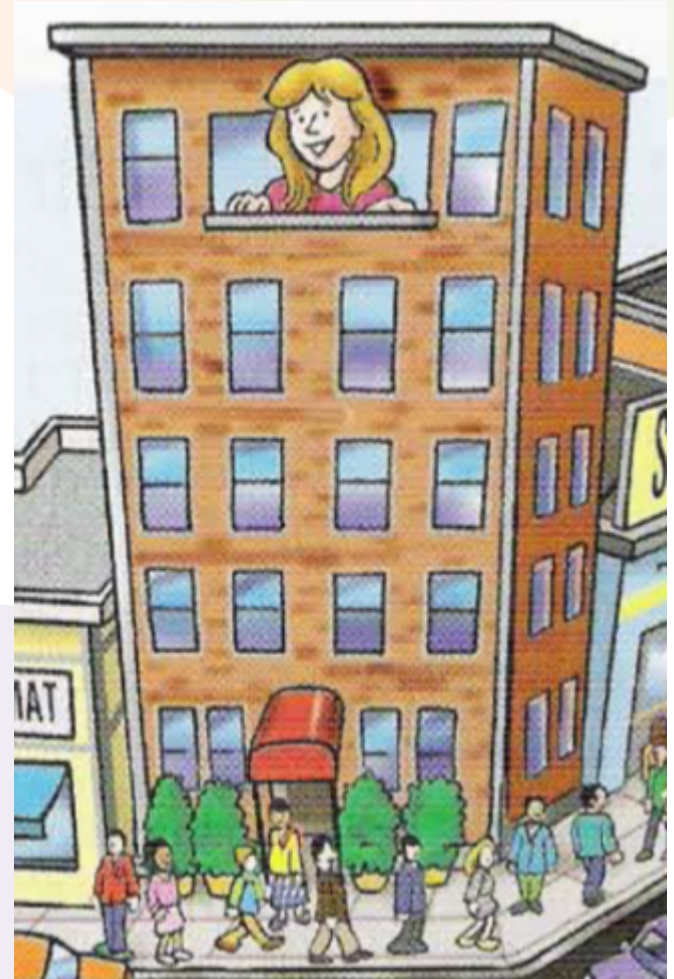
4. Hair salon





AMY'S APARTMENT BUILDING

Amy's apartment building is in the center of town. Amy is very happy there because the building is in a very convenient place.





Across from the building there's a bank, a post office and a restaurant.





Next to the building, there's a drug store and a laundromat.





Around the corner from the building there are two supermarkets.



There's a lot of noise near Amy's apartment building.
There are a lot of cars on the street, and there are a
lot of people on the sidewalks all day and all night.

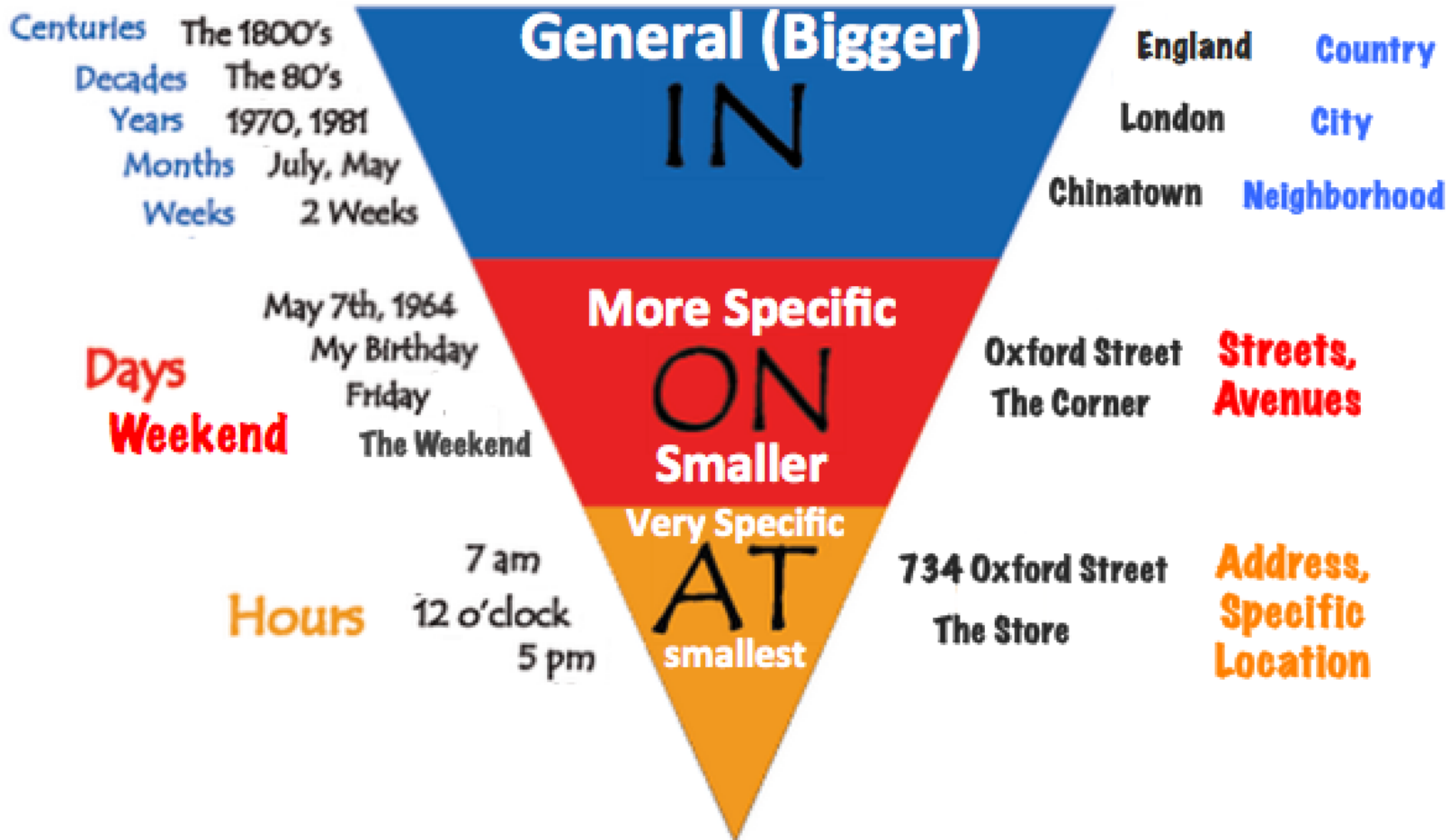




However, Amy isn't very upset about the noise in her neighborhood. Her building is in the center of town, it's a very busy place, but it's a conventional place to live.



Time **IN – ON – AT** Location





SEE

you

NEXT CLASS!

Thank *you* for joining us today.